

Corners to be Indexed

E1/4 22-107-40

NOV 15 2024

Karen Brown

I hereby certify that this document and the data contained herein was prepared by me or under my direct supervision.

[Signature]

10/28/2024

Daniel L. Bueltel

Date

License No. 43844

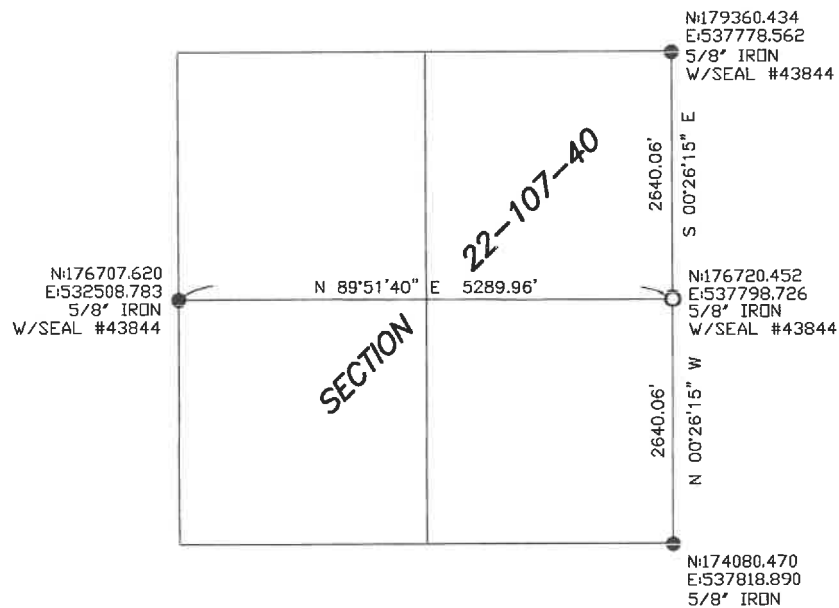
CERTIFICATE OF LOCATION OF GOVERNMENT CORNER

Land survey monuments situated in Section 22, Township 107, Range 40, 5TH P.M.

STATE OF MINNESOTA, County of Murray



- FOUND MONUMENT
- SET MONUMENT



Murray County Coordinate System (1996 Adj.)

Statement of Evidence

E1/4 22-107-40

In June of 1861 J.W. Myers surveyed the township lines.

In September of 1861 L. Brockmann subdivided the township lines.

On November 17, 2022 Bueltel-Moseng Land Surveying searched the area and found nothing. Set a $\frac{5}{8}$ " iron with seal #43844 midway and on line between the section corners. Corner fell in the intersection of well established occupation lines.